



Versions

- \_\_\_\_\_ TLP1...
- \_\_\_\_\_ TLP2...
- \_\_\_\_\_ TLP3...
- \_\_\_\_\_ TLP4...
- \_\_\_\_\_ TLP5...

# TLP..

## WALL-MOUNTED CONTROL STATION



**ATTENTION**

Before any installation or maintenance operation, disconnect the power supply to the system. Before restoring the power supply, make sure that all connections to the device have been made correctly. Giovenzana International B.V. disclaims any responsibility for any damage to things and people caused by non-compliance with the rules described here.



Before use, read this booklet carefully to acquaint yourself with the features of the product. This booklet is an integral part of the product and therefore must be kept until the product is dismissed.



Giovenzana International B.V. reserves the right to change the features and data shown in this document at any time and without notice. This document cannot therefore be considered a contract with third parties.

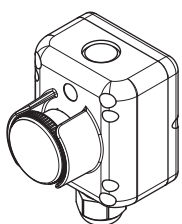


Any improper installation or any tampering of the device may cause serious personnel injury or property damage, therefore, the installation and maintenance must be performed by specialized and authorized personnel.

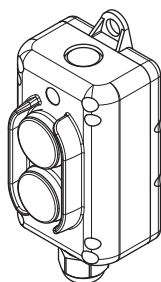


The use of this device is not allowed in environment with a potentially explosive atmosphere or in presence of corrosive substances and in salt spray.

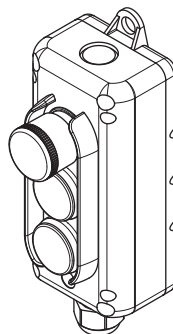
The pictures in this manual are for illustrative purposes and are valid for all the products of this series.



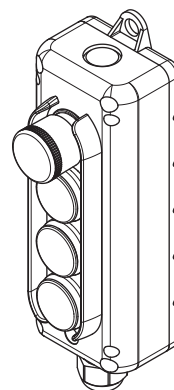
TLP1...



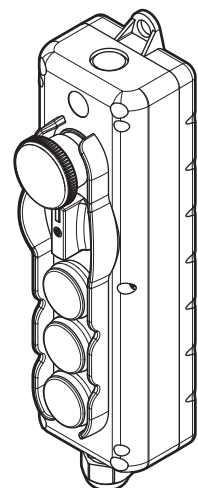
TLP2...



TLP3...



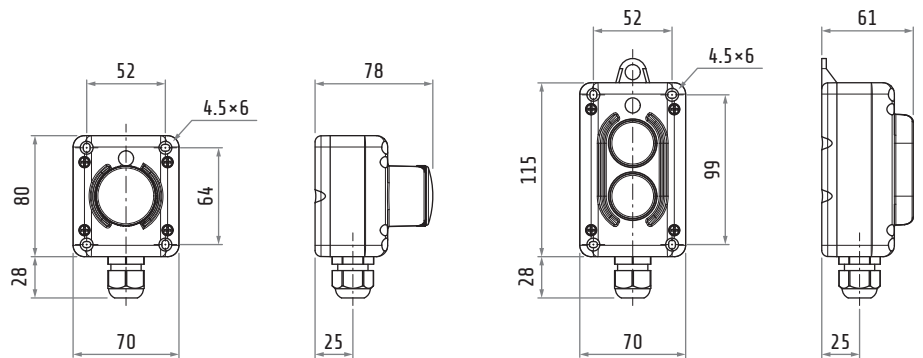
TLP4...



TLP5...

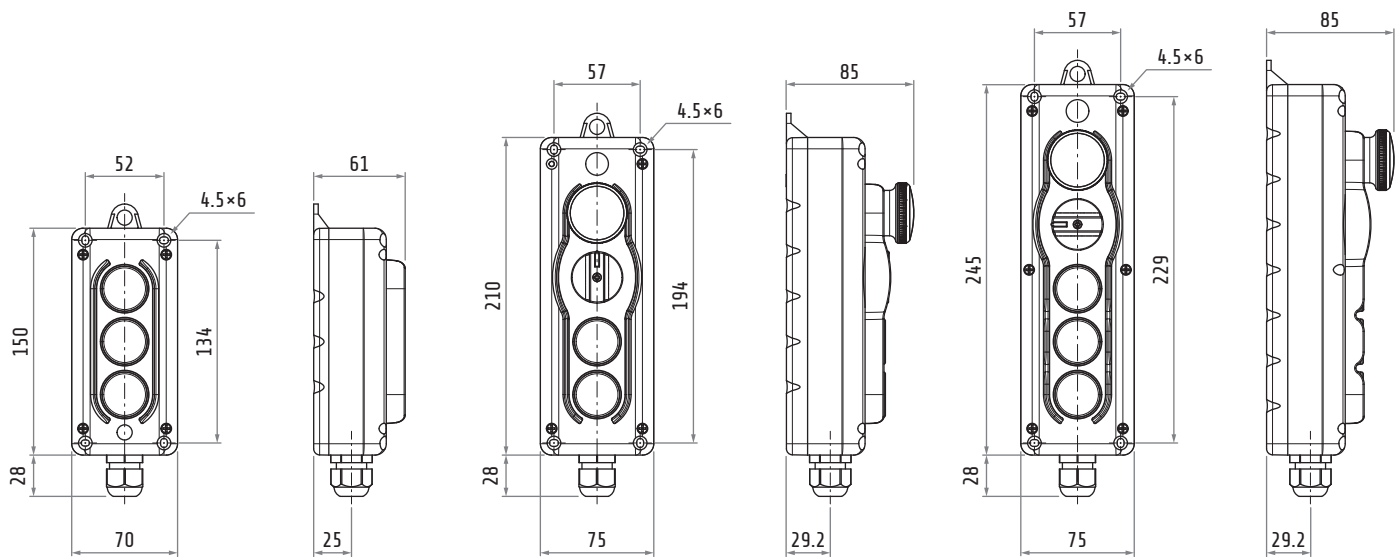
Material		thermoplastic
Material group		II
Pollution class		3
Temperature	operating	-25°C ... +70°C
	storage	-30°C ... +70°C
IP rating		IP65
Cable entry	cable gland	M20×1.5
	knockout	M20

Dimensions in mm  
Illustrations NOT in scale



TLP1...

TLP2...

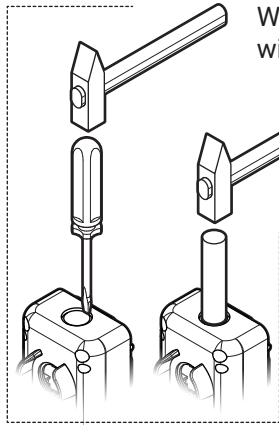


TLP3...

TLP4...

TLP5...

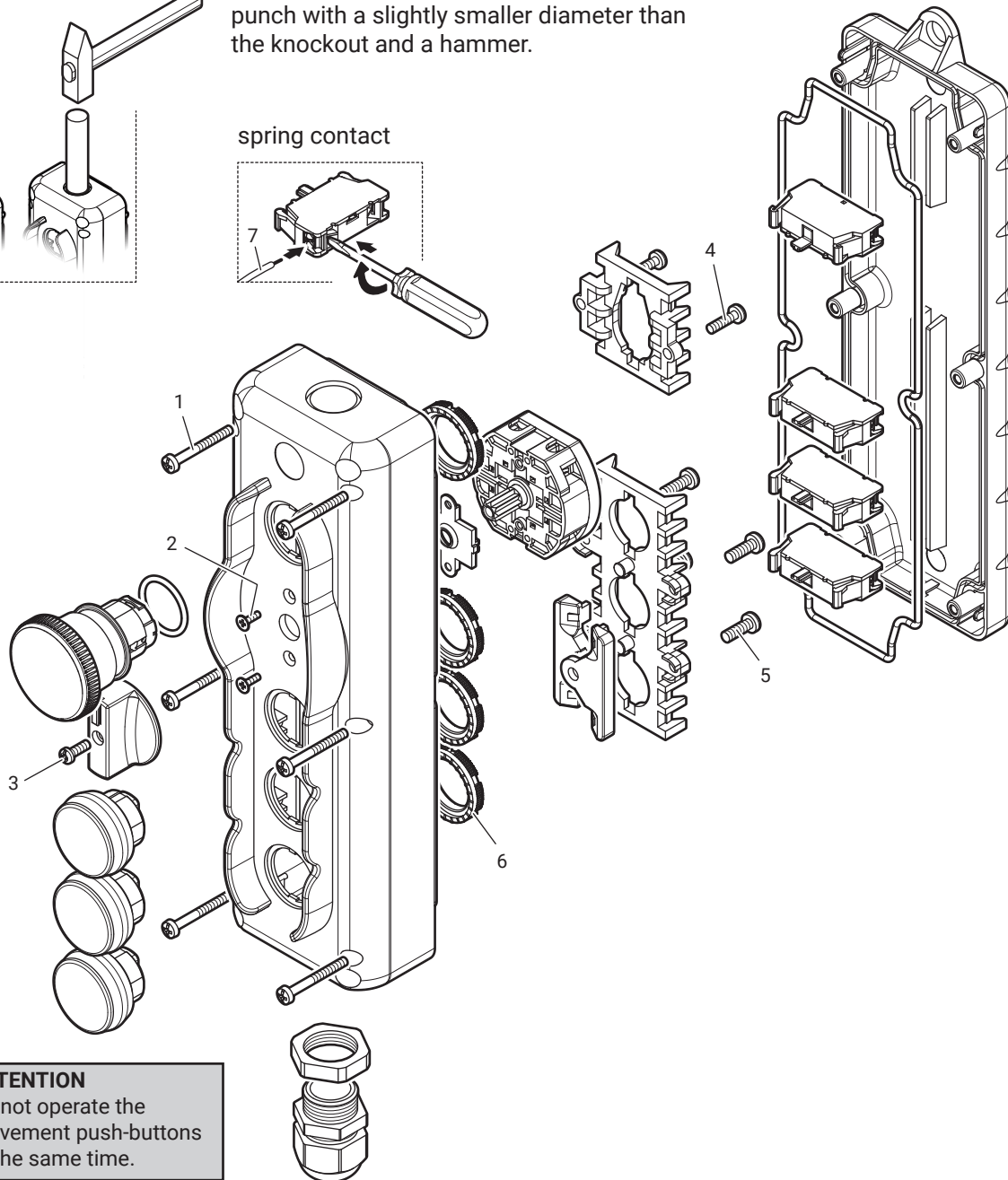
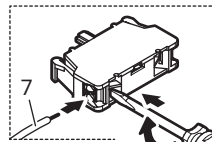
## M20 knockout



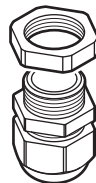
Weaken the knockout in several points around the perimeter with a flat head screwdriver and a hammer.

Complete the breakthrough with a cylindrical punch with a slightly smaller diameter than the knockout and a hammer.

spring contact



**ATTENTION**  
Do not operate the movement push-buttons at the same time.



1	1.3 - 1.7 N·m	11.5 - 15 lb·in	phillips self tapping screw 4×30
2	0.4 - 0.5 N·m	3.5 - 4.4 lb·in	phillips screw 3×9
3	0.15 - 0.2 N·m	1.3 - 1.8 lb·in	phillips screw 3×9.5
4	0.45 - 0.6 N·m	4 - 5.3 lb·in	phillips screw 3×13
5	1.4 - 1.6 N·m	12.5 - 14.2 lb·in	phillips screw 3.9×16
6	2.25 - 2.8 N·m	19.9 - 24.8 lb·in	use the accessory code PCF (not included)
7	-	-	1 or 2 flexible conductors: 0.5 ... 2.5 mm <sup>2</sup> / 18 ... 12 AWG 1 or 2 solid conductors: 0.5 ... 2.5 mm <sup>2</sup> / 18 ... 12 AWG wire peeling length: 8 mm <b>use copper conductors only</b>